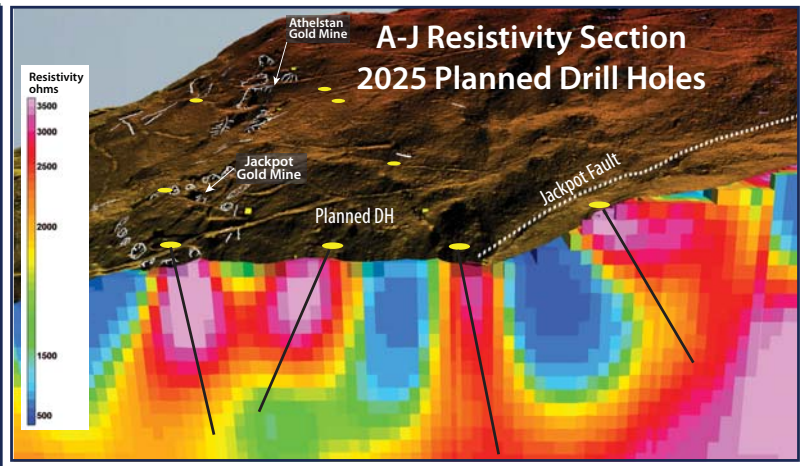
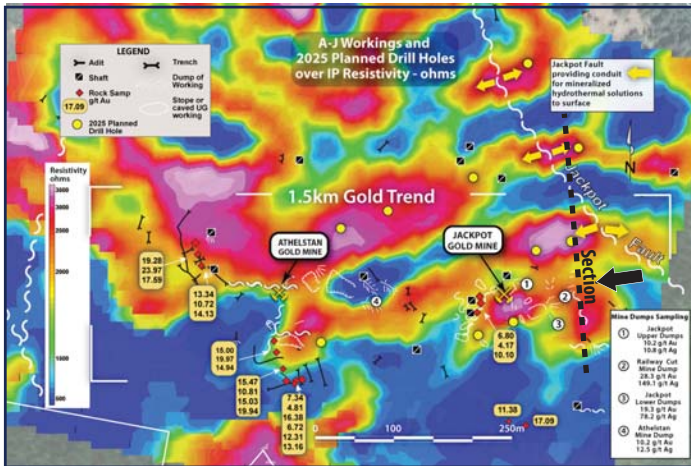
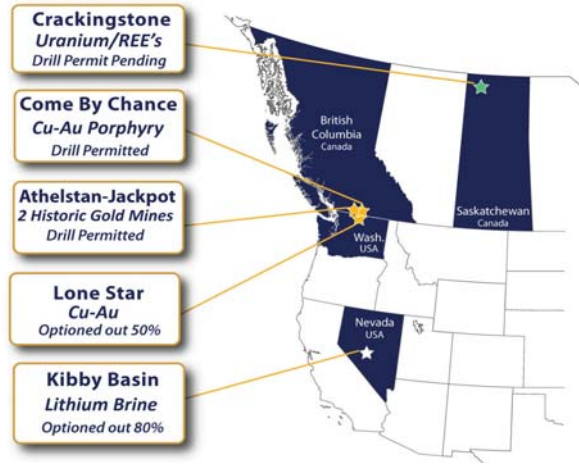


**GOLD**

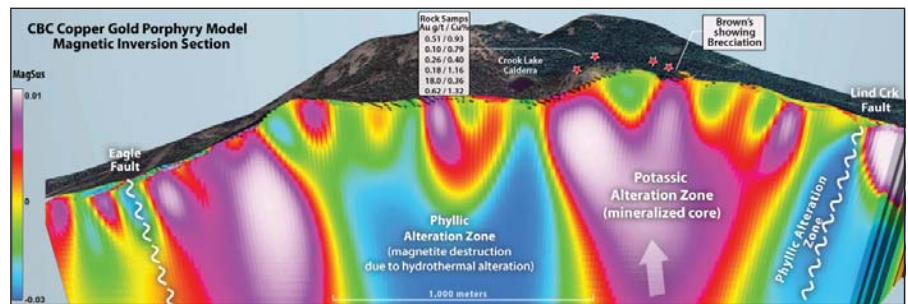
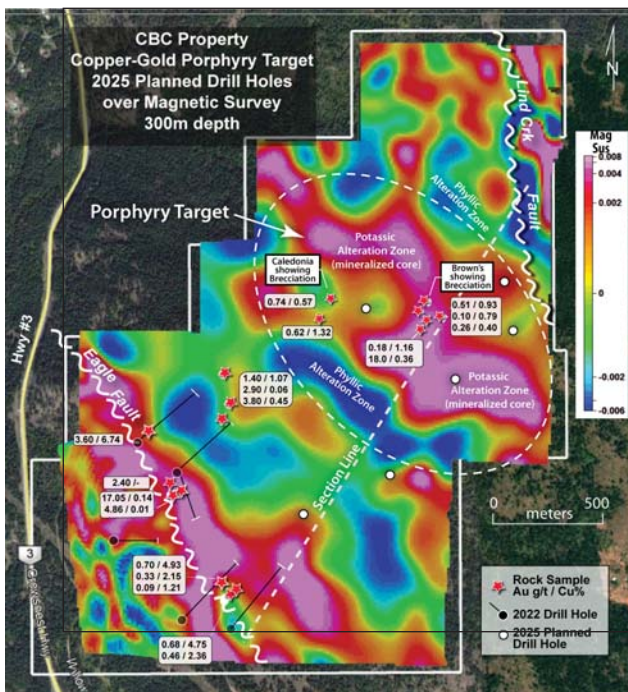
US \$3,156/oz  
Cdn \$4,514/oz  
Cdn \$161/gram

## Athlestan-Jackpot (A-J) Gold Project 100% Canadian Gold Project



- Past Production: 7,600 ozs Au & 9,000 oz Ag
- Extensive surface gold mineralization along 1,500m gold trend.
- A potential resource of 2,000-5,000 ounces of gold in the surface and near surface mineralized areas appears to exist based on previous trenching results and sampling of extensive mine dumps.
- Investigating potential for mineable surface and near surface ore zones with economic gold grades along a 1,500m gold trend.
- 2025 drilling to test high resistivity "potential feeders" which are coincident to historical gold occurrences at surface.

## Come By Chance (CBC) Copper-Gold Porphyry Target

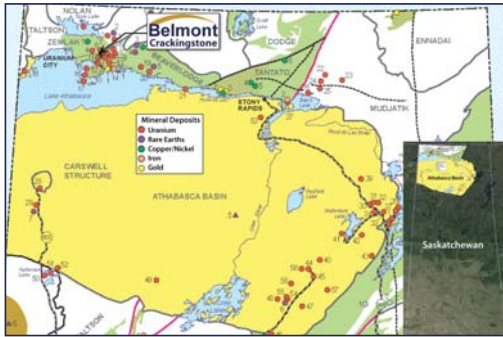


- The magnetic data highlights a **potentially large porphyry style intrusion** style setting for copper-gold mineralisation similar to other well-known porphyry deposits globally.
- A magnetic high elliptical magnetic anomaly is detected at the **Potassic alteration zone** (mineralized core) and is surrounded by a low magnetic anomaly related to the phyllic alteration zone which reflects magnetite destruction due to hydrothermal alteration..
- Magnetic high is coincident with **Brecciation at surface** along with elevated copper-gold rock chip samples
- This system is bounded by two regional structurally controlling faults.



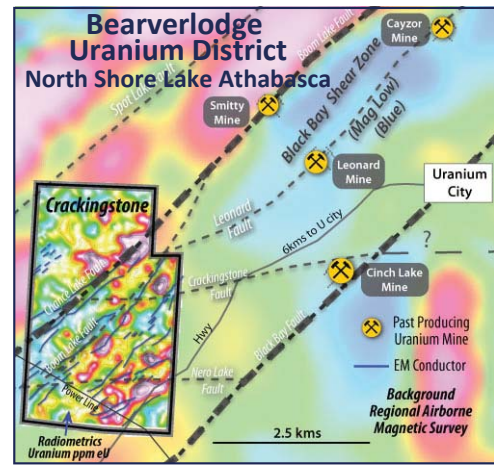
# Crackingstone Uranium/Rare Earths

An exceptional opportunity for uncovering a significant Uranium deposit, along with the potential for a major Rare Earth discovery.



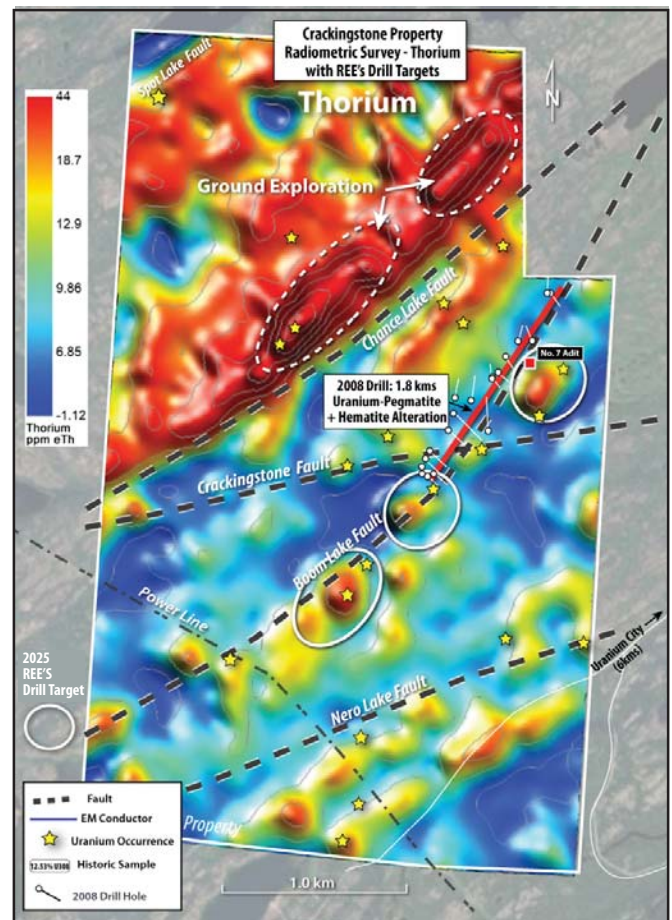
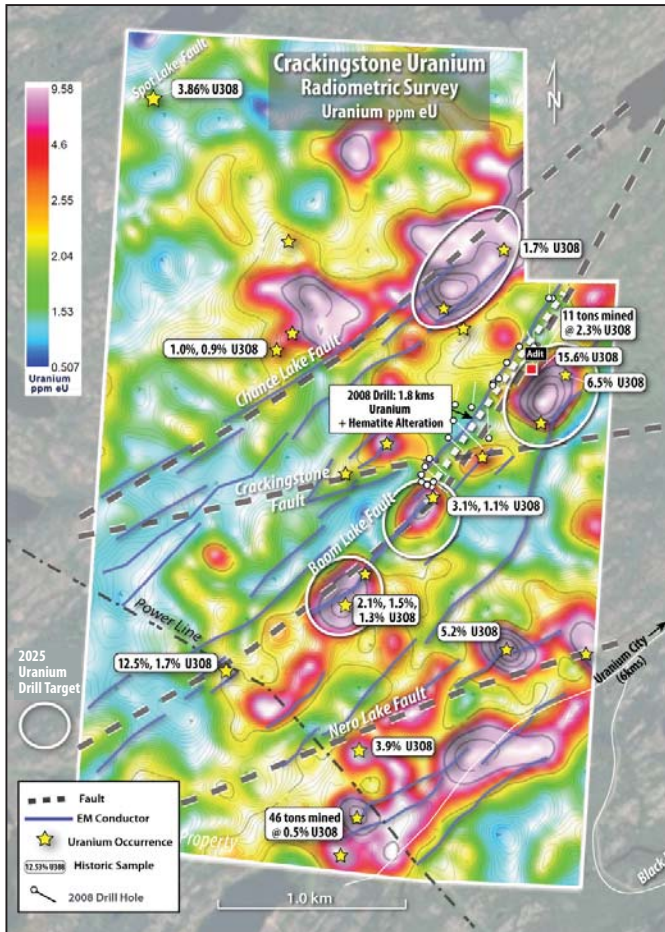
## Uranium

- 3 Structural/Conductive/Mineralized Corridors have been identified on the Crackingstone property.
- Only 6 kms from Uranium City with airport, accommodations and all supporting services.
- High grade uranium at surface coincident with structural corridors.
- High priority drill targets; drill permit pending.



## Rare Earth Elements (REE's)

- In Rare Earth Element (REE) exploration, the relationship between **thorium, faults and pegmatites** is crucial for understanding the geologic processes that concentrate REEs and thorium into economically valuable deposits.
- Nearby Appia Rare Earth and Uranium returned some of the highest grades of REE's in the world while drilling Thorium and pegmatites associated with faults.



## Management & Directors

George Sookochoff, B.Comm.	President, CEO, Director
Nancy Kawazoe	CFO
Gary Musil	Director
Patrick Brandl (Austria)	Director
Michael Kriebel (Germany)	Director
Laurence Sookochoff, P.Eng.	Advisor

## Share Structure (March, 2025)

TSX.V:BEA

Shares:	102.2M
Warrants:	0 M
Options:	7.3M
Fully Diluted:	109.5M