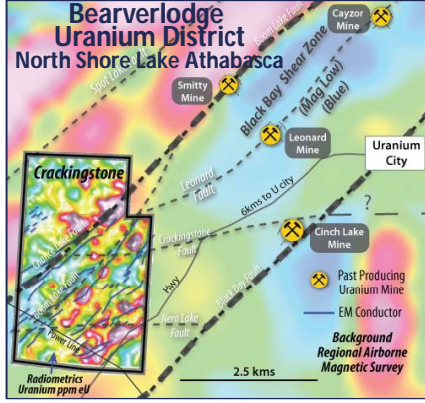
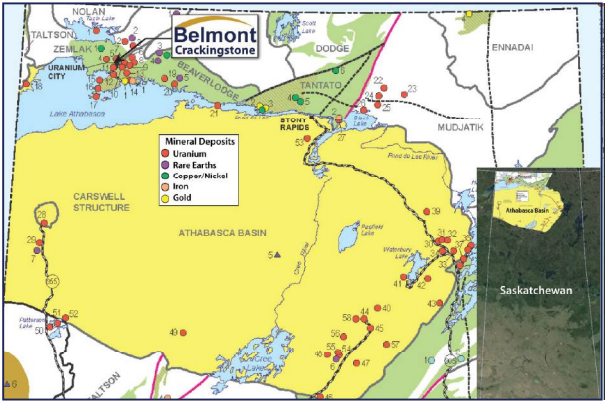


# A Diverse Portfolio of Projects and Metals

## Crackingstone Uranium/Rare Earths



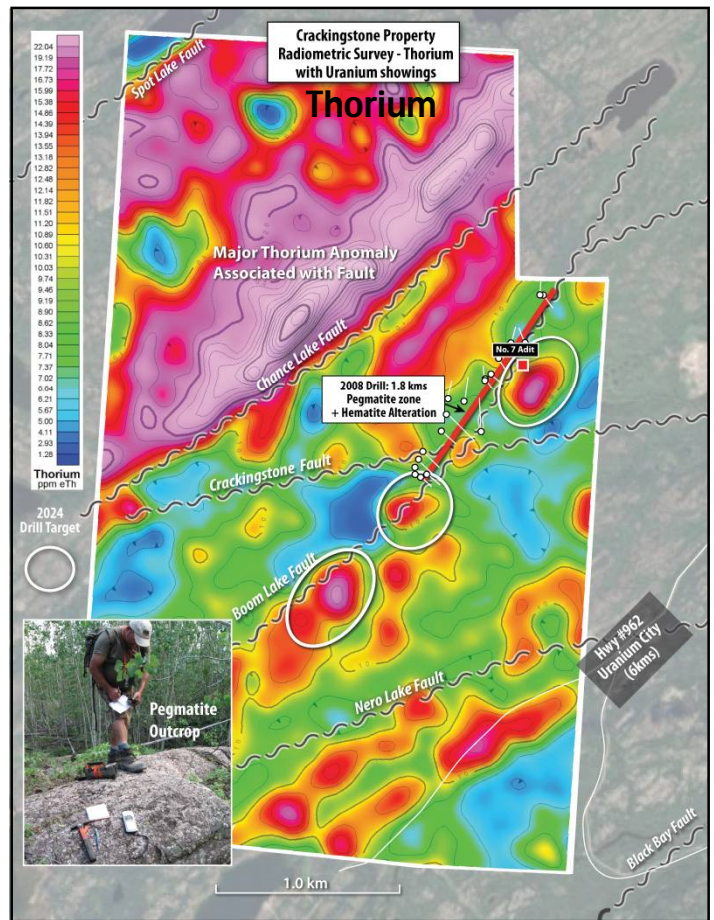
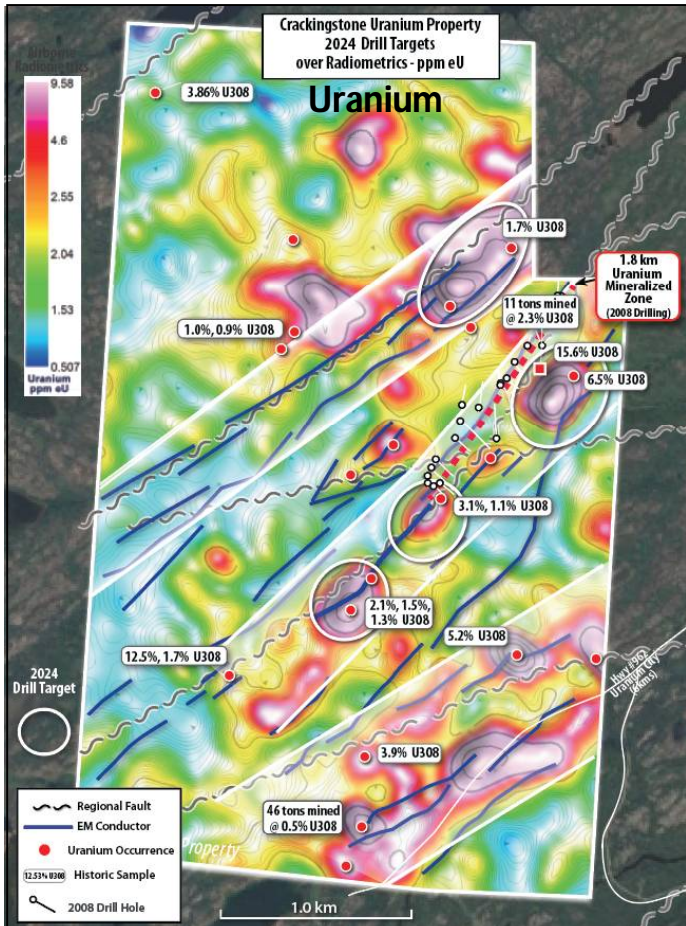
### Uranium

- 2008 drilling intercepted 1.8kms uranium mineralization
- High grade uranium at surface.
- 3 structural conductive mineralized corridors.
- Most all of the radioactive anomalies are found within or near the major contact faults which may act as channels for mineralized fluids from the subsurface.

### Rare Earth Elements (REE's)

#### Thorium + Pegmatite

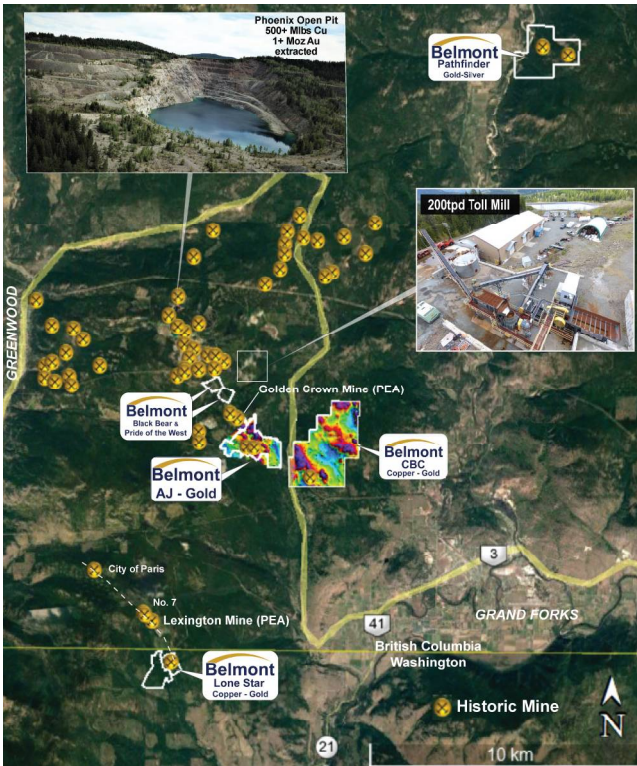
- Nearby, Appia Rare Earths & Uranium has drilled some of the highest-grade rare earth elements (REEs) in the world.
- Their REEs are found in **pegmatites within thorium anomalies**.
- 2008, drilling at Crackingstone intercepted a 1.8 km pegmatite dyke related to a nearby thorium anomaly.
- But there was no interest in REEs at that time, so the pegmatite was not assayed for REEs.
- 2024 drilling will also target coincident Thorium and Uranium.



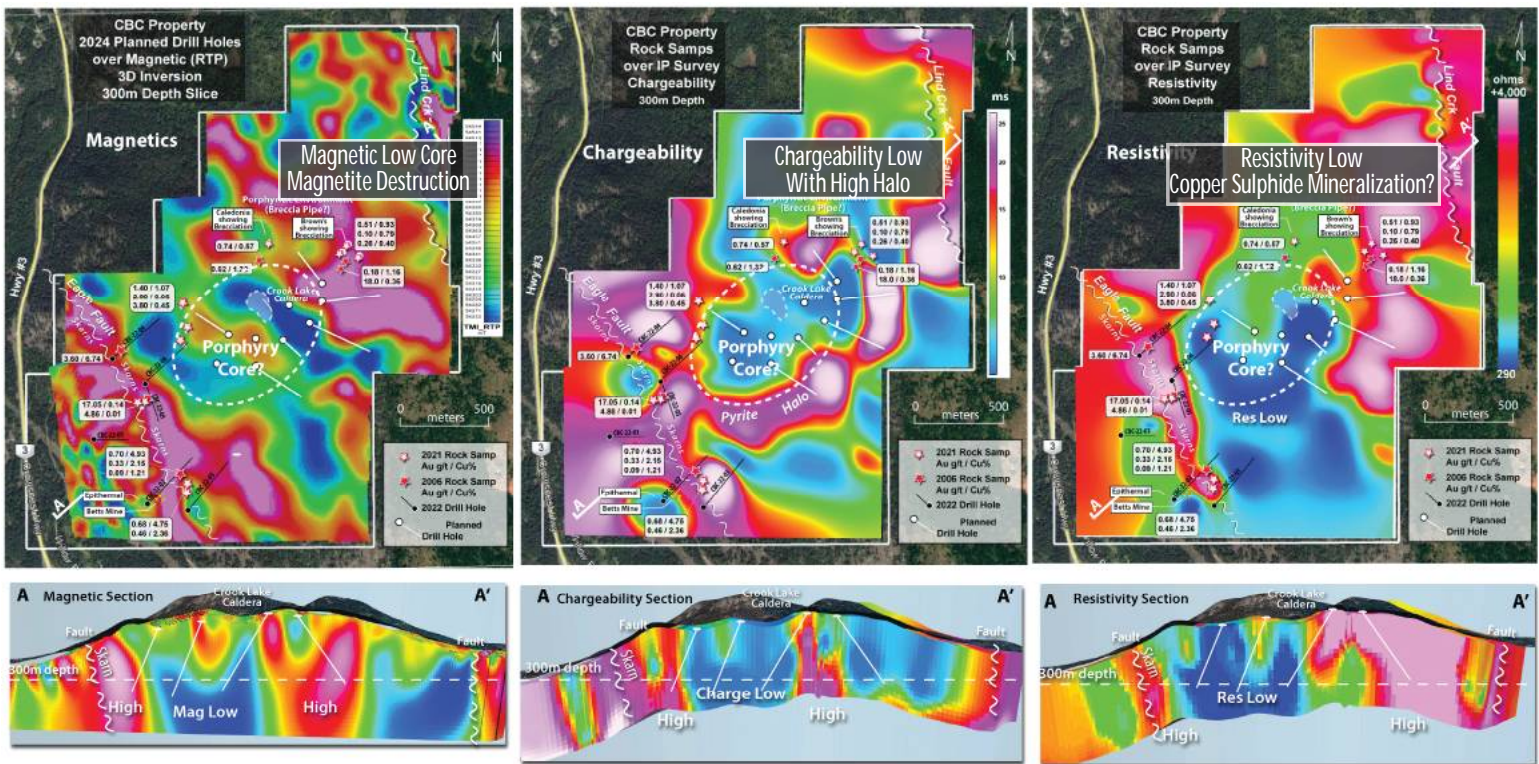
# CBC Copper-Gold Porphyry Target

## Textbook Porphyry Geophysical Signature

- A strong coincident magnetic low (magnetite destructive potassic alteration?)
  - Resistivity low – highly conductive anomaly (possibly due to sulphide rich porphyry core?)
  - Enveloped by peripheral pyrite-rich, propylitic alteration, (common in porphyry systems.)
- In this particular case a ring structure around a volcanic caldera.
- This central zone is bounded by two regional structurally controlling faults.
  - 2022 Drilling intercepted propylitic alteration with localized skarn alteration which is distal to a possible heat source like those known elsewhere to host porphyry-style mineralization.



Southern British Columbia Property Map



### Management & Directors

George Sookochoff, B.Comm.	President, CEO, Director
Nancy Kawazoe	CFO
Gary Musil	Director
Patrick Brandl (Austria)	Director
Michael Kriebel (Germany)	Director
Laurence Sookochoff, P.Eng.	Advisor

### Share Structure (April 30, 2024)

TSX.V:BEA	
Shares:	102.2M
Warrants:	0 M
Options:	7.3M
Fully Diluted:	109.5M