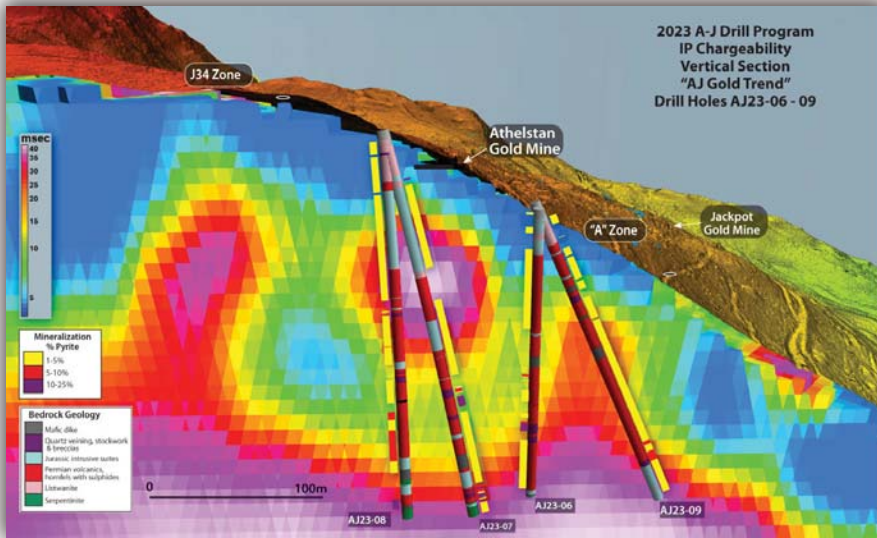


A portfolio of highly prospective projects.

Copper, Gold, Rare Earths, Lithium & Uranium

A-J Gold - B.C. 100%

- 2,000-metre drilling completed
- Mineralization intersected over 100 metre durations in all four diamond drill holes directly beneath and nearby the Athlestan gold mine.
- May potentially be one or more conduits and fracture spaces for deep seated mineralizing hydrothermal fluids and related to the auriferous deposits found in the historic mining above.



- Situated in one of the most prolific historic mining districts in North America.
- 2 former shallow gold mines produced 7,000 ozs gold and 6,000 ozs silver.
- Drilling tested for a potential feeder contact/structure for the near-surface gold mineralization within a 1.0 km mineralized gold trend.
- Drill permitted (5yrs).

Crackingstone Uranium + Rare Earths, Sask. - 100%

High grade uranium + 1.3km Pegmatite Dyke Discovery

Uranium:

- Historic: 11 tons of material shipped to the Lorado mill grading 2.3% U3O8
- Rix Athabasca Uranium Mines Ltd. reported a grab assay of 12.53% U3O8

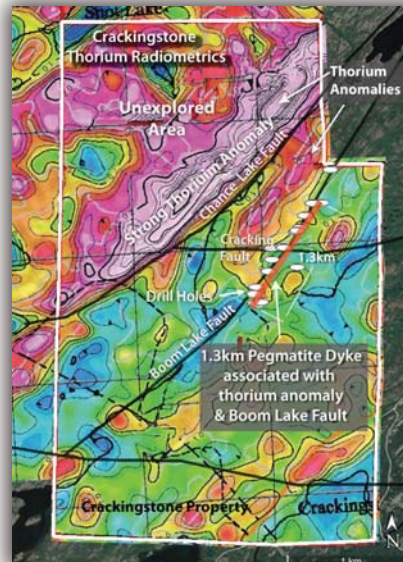
Rare Earth Elements (REE's):

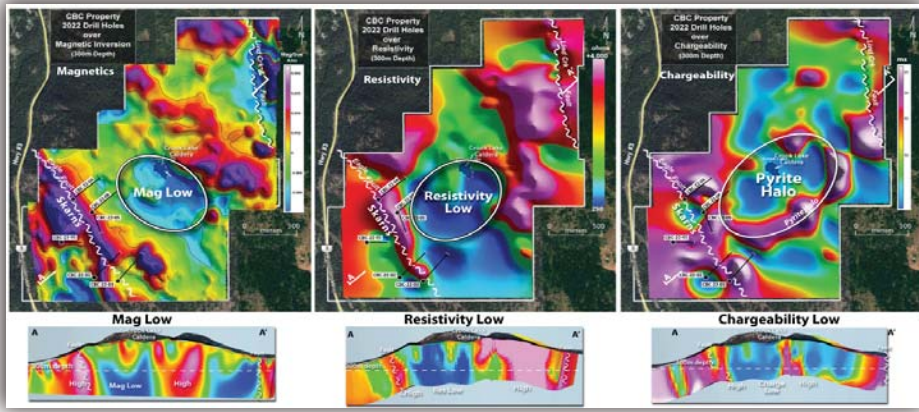
Pegmatite Discovery

- Recent review of 2008 drill logs show 1.3 km pegmatite dyke drilled but never assayed for REE at that time as there was no interest in REE's
- Numerous Pegmatite outcrops on property.

2023 Plans

- 3,000 meters of 2008 drill core are stored in nearby Uranium City.
- Send pegmatite sections for REE's analysis.
- Map and sample Pegmatite outcrops on property





CBC Copper-Gold - B.C. 100%

Targeting Copper-Gold Porphyry

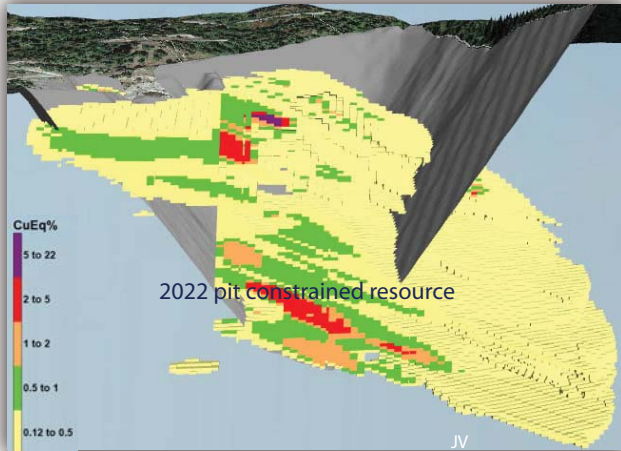
- Geophysics and drilling provide vectors pointing to potential core of porphyry system
- Multi coincident geophysical anomalies bounded by faults
- 2021 drilling intercepted periphery of porphyry copper-gold system
- Phase II drilling to target core of system

Lone Star Copper-Gold - Washington State

- *New resource estimate announced - Oct., 2022*
- *Preliminary Economic Assessment Report (PEA) in progress*
- 2022 option partner Marquee Resources (ASX:MQR) drilled 7,000 meters and produced a new maiden Mineral Resource:
- Marquee has spent \$3M Cnd on Lone Star property in 2022 for 50% interest. Completion of PEA will earn an additional 30%.

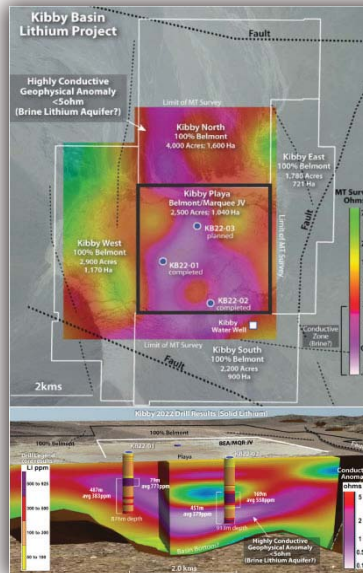
Lone Star 2022 Resource Estimate

Category	Tonnage (Mt)	CuEq (%)	Cu%	Au g/t	Au oz	CuEq (Mlb)
Indicated	9.7	0.62	0.45	0.24	82,118	132.31
Inferred	3.5	0.45	0.31	0.20	24,692	34.65



Kibby Basin Lithium - Nevada

- Optioned out 10 sq kms Kibby Playa center block to Marquee for 80% . Belmont retains 100% of surrounding 44 sq kms.
- Belmont is exclusively premitted for water over entire Kibby basin.
- Drilling deep seated potential lithium brine target confirmed high levels of lithium-bearing sediments along with dissolved lithium in the groundwater.
- Mineralised intervals containing up to 924 ppm lithium with greater than 300 ppm lithium over thicknesses in excess of 450m have been identified in core samples of clay-rich playa sediments.



Management & Directors

George Sookochoff, B.Comm. President, CEO, Director & Chairman
 Gary Musil CFO & Director
 Patrick Brandl Director
 James Place, P.Geo. Director
 Laurence Sookochoff, P.Eng. Advisor

Share Structure (October 31, 2023)

TSX.V:BEA
 Shares: 78.7M
 Warrants: 7.5M
 Options: 7.7M
 Fully Diluted: 93.9M