

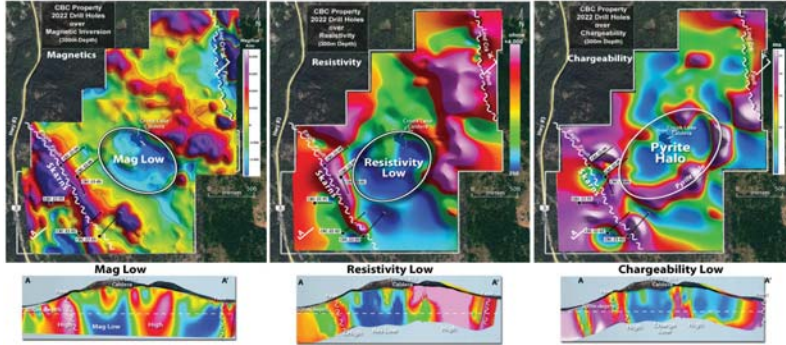
"Several Upcoming Catalysts For 2023"

CBC Copper-Gold - 100%

- 2022 geophysics and drilling continued to provide vectors pointing towards a potentially large copper-gold porphyry system.

2023 Planned Exploration Program

- A 2023 Phase II drill program is planned to drill the potential core of the system



2023 planned drill holes over IP at 300m depth



One of several mine dumps to be bulk sampled
Dumps assayed up to 1.0 oz/t Gold

AJ Gold-Silver - 100%

Short path to revenue generation

- 2 previous underground gold mining operations (1900 to 1940) produced 7,600 ozs Au and 9,000 oz Ag. The mining left numerous mine dumps.
- Mine dumps have been sampled up to 1 oz/t Gold*
- "A potential resource of 2,000-5,000 ounces of gold in the surface and near surface mineralized areas appears to exist within the A-J Group based on previous trenching results and sampling of mine dumps."*

*Arrowhead Resources Surface Dump Sampling report, Grant 1981

2023 Planned Exploration Program

- Belmont is planning to deliver bulk samples to Envirometal Technologies in Burnaby, B.C. who have developed a gold leach process that is cost-effective and eco-friendly alternative to the traditional use of cyanide and smelting.
- The process typically achieves over 96% recoveries.



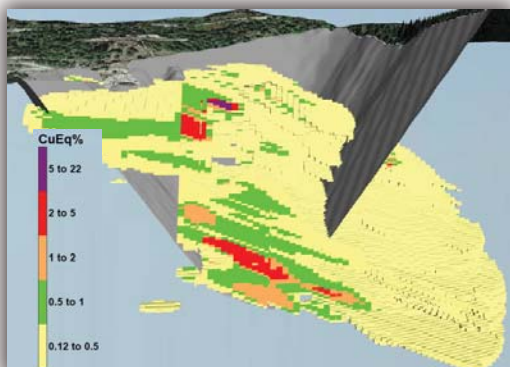
2008 Belmont Geologist studying Cracklingstone
pegmatite outcrop (not assayed)

Cracklingstone Uranium + REE's - 100%

- Belmont is revisiting Cracklingstone in northern Sask. with the focus on Rare Earth Elements (REE's).
- A recent review of drill logs from a 2008 - 20 hole - 3,000m drill campaign show Pegmatite intercepts in 17 of the 20 drill holes.
- Several large Pegmatite outcrops are located on the property.
- The Pegmatite drill intercepts and outcrops however were never assayed in 2008 as there was no interest for REE's at that time.
- Nearby Appia Rare Earths and Uranium Corp. has recently reported some of the highest REE grades in the world associated with Pegmatite.

2023 Planned Exploration Program

- The company plans to re-log 3,000 meters of 2008 drill core, which are stored at nearby Uranium city and assay all Pegmatite drill intercepts for REE's.



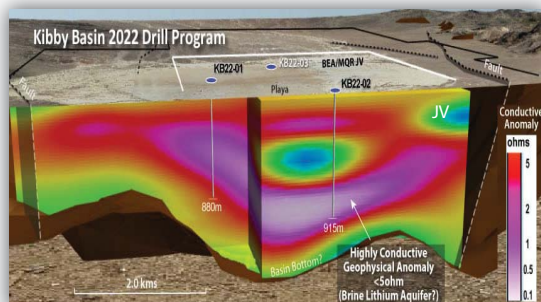
2022 pit constrained resource

Lone Star Copper-Gold

• New resource estimate announced - Oct., 2022

- 2022 JV partner Marquee Resources drilled 7,000 meters and produced New maiden Mineral Resource: Indicated Resource of 9.7Mt @ 0.62% CuEq and Inferred Resource of 3.5Mt @ 0.45% CuEq. Within the Global Mineral Resource sits a high-grade portion of 1.1Mt @ 2.05% CuEq.
- 2023 Planned Exploration Program
- Option partner Marquee planning to continue drilling and produce PEA which is a final condition to earn their 80% interest.

Lone Star 2022 Resource Estimate						
Category	Tonnage (Mt)	CuEq (%)	Cu%	Au g/t	Au oz	CuEq (Mlb)
Indicated	9.7	0.62	0.45	0.24	82,118	132.31
Inferred	3.5	0.45	0.31	0.20	24,692	34.65



Kibby Basin Lithium

- JV partner Marquee Resources has drilled 2 holes for a total of 1,900 meters targeting a deep seated potential lithium brine target. Results confirmed high levels of lithium-bearing sediments along with dissolved lithium in the groundwater.
- MQR has earned its 80% interest by:
 - issuing \$100,000 cash
 - incurring \$2.5M in exploration
 - issuing 3 million MQR shares to BEA

2023 Planned Exploration Program

- MQR anticipates drilling in Q2 2023.

Management & Directors

George Sookochoff, B.Comm. President, CEO, Director & Chairman
Gary Musil CFO & Director
James Place, P.Geo. Director
Laurence Sookochoff, P.Eng. Advisor

Share Structure (Feb. 24, 2023)

TSX.V:BEA
Shares: 63.9M
Warrants: 19.9M
Options: 4.9M
Fully Diluted: 88.7M