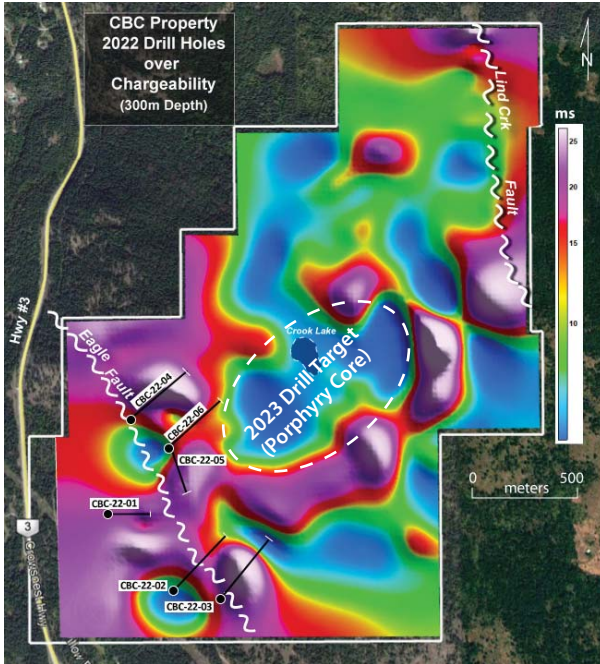




**"A Robust Project Pipeline of High-Quality Projects."**



## ■ CBC Copper-Gold Porphyry Target

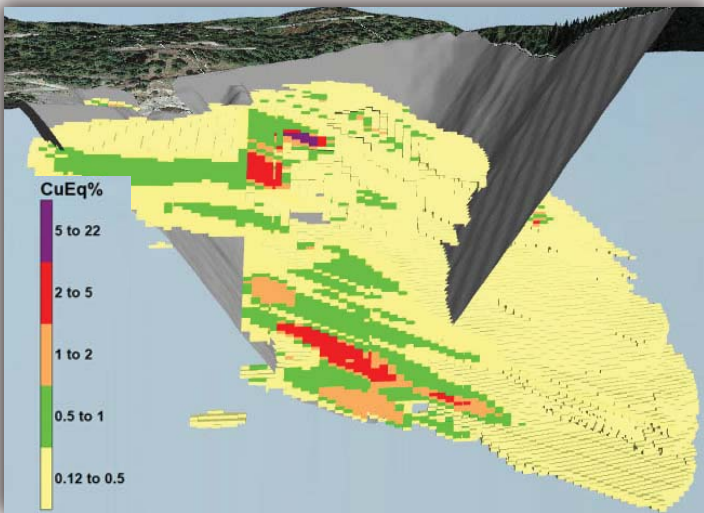
- Geophysical surveys and 2022 drill results vector in on large copper-gold porphyry system.
- 2022 drill program intercepted porphyry peripheral to SW.
- Phase II drilling to start Q1 2023 to target porphyry core.

## ■ Lone Star Copper-Gold

- New resource estimate announced - Oct. 26, 2022

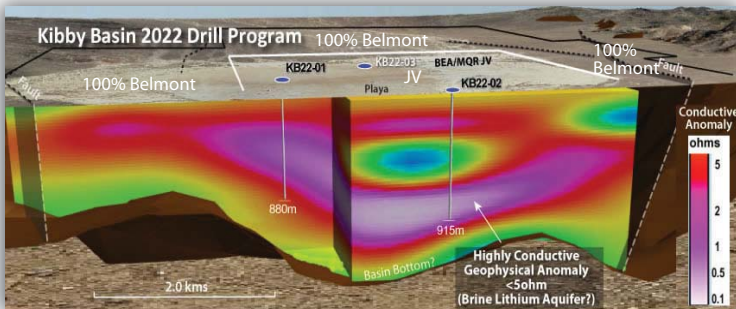
Lone Star 2022 Resource Estimate						
Category	Tonnage (Mt)	CuEq (%)	Cu%	Au g/t	Au oz	CuEq (Mlb)
Indicated	9.7	0.62	0.45	0.24	82,118	132.31
Inferred	3.5	0.45	0.31	0.20	24,692	34.65

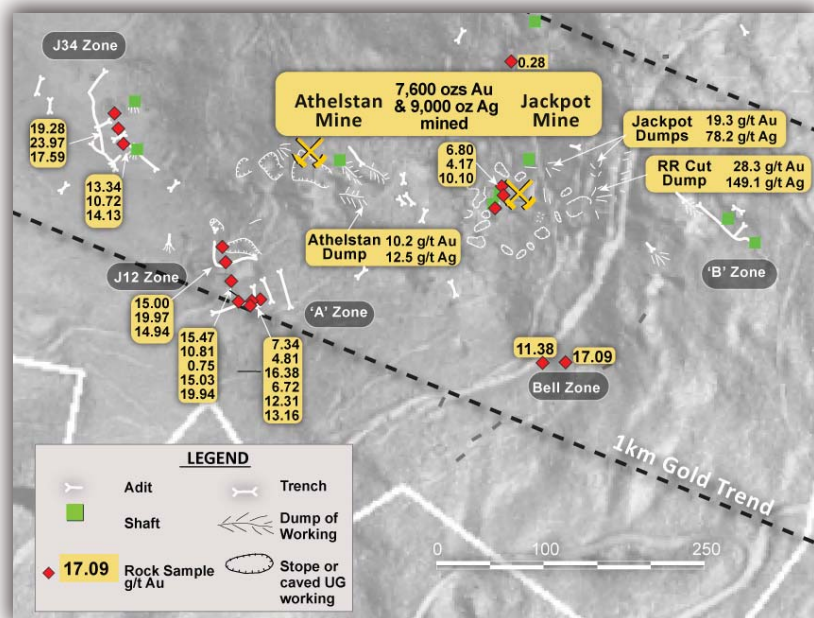
- JV partner financing drilling and PEA for 80% Resource extends from surface and remains open at depth.
- Attractive open pit mining scenarios.
- Drilling to re-start Q1-2023 to focus on high grade material for PEA.



## ■ Kibby Basin Lithium

- Targeting large potential lithium brine aquifer beneath Kibby playa.
- JV partner spending \$2.5M for 80% of 10% of property.
- 2,000m drill program completed - assays pending
- Drilling of 3rd hole to start Q1-2023.

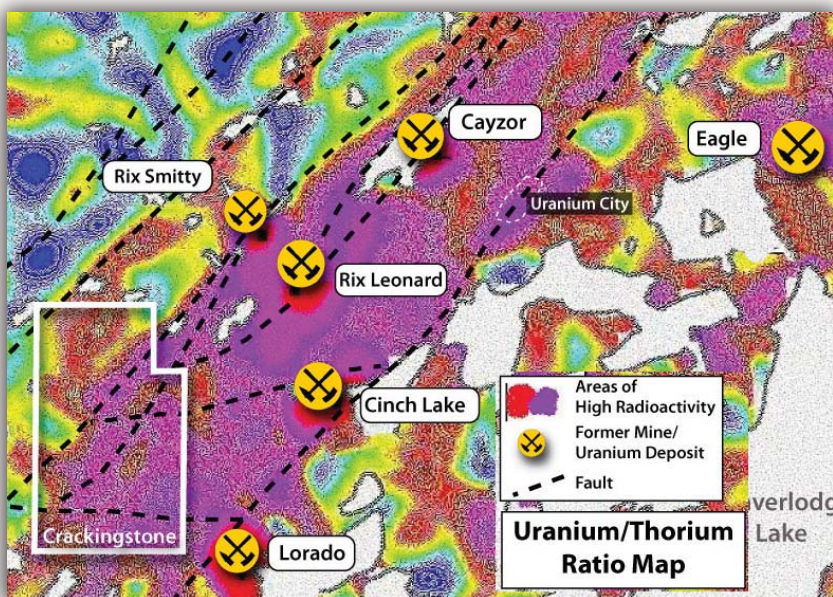




High grade gold sampling at surface

## ■ Athelstan-Jackpot (A-J) Gold Silver Surface and Near Surface Bulk Tonnage Gold Prospect

- Property contains 2 past producing gold mines. Production: 7,600 ozs Au & 9,000 oz Ag (Minfile 082ESE047)
- "A potential resource of 2,000-5,000 ounces of gold in the surface and near surface mineralized areas appears to exist within the A-J Group based on sampling of mine dumps" (Arrowhead Resources Surface Dump Sampling report, Grant 1981)
- Bulk sampling planned for Q1-2023
- 200 tpd toll mill located only 1.5kms from site



Major Faults over Uranium/Thorium Ratio Map

## ■ Crackingstone Uranium

- Northern Saskatchewan has the richest and largest reserves of uranium in the world.
- From 1953 to 1982, sixteen deposits were brought into production in the Uranium City area producing 70,250,000 lbs U3O8 averaging 0.24 % U3O8. The grades ranged from 0.18% to 0.43%.
- 18 uranium showings on property
- Two bulk samples were taken from two showings 46 ton and 6.5 ton hand sorted each assaying 0.5% U3O8.\*
- Grab assay of 12.5% U3O8 reported in SW area of property.\*
- Major faults are primary host to large uranium deposits.

\*2006 Crackingstone report by R.A. Bernatchez, P. Eng. Consulting Geologist

### Management & Directors

George Sookochoff, B.Comm. President, CEO, Director & Chairman  
 Gary Musil CFO & Director  
 James Place, P.Geo. Director  
 Laurence Sookochoff, P.Eng. Advisor

### Share Structure (Dec. 23, 2022)

TSX.V:BEA  
 Shares: 63.9M  
 Warrants: 22.9M  
 Options: 5.4M  
 Fully Diluted: 92.2M