

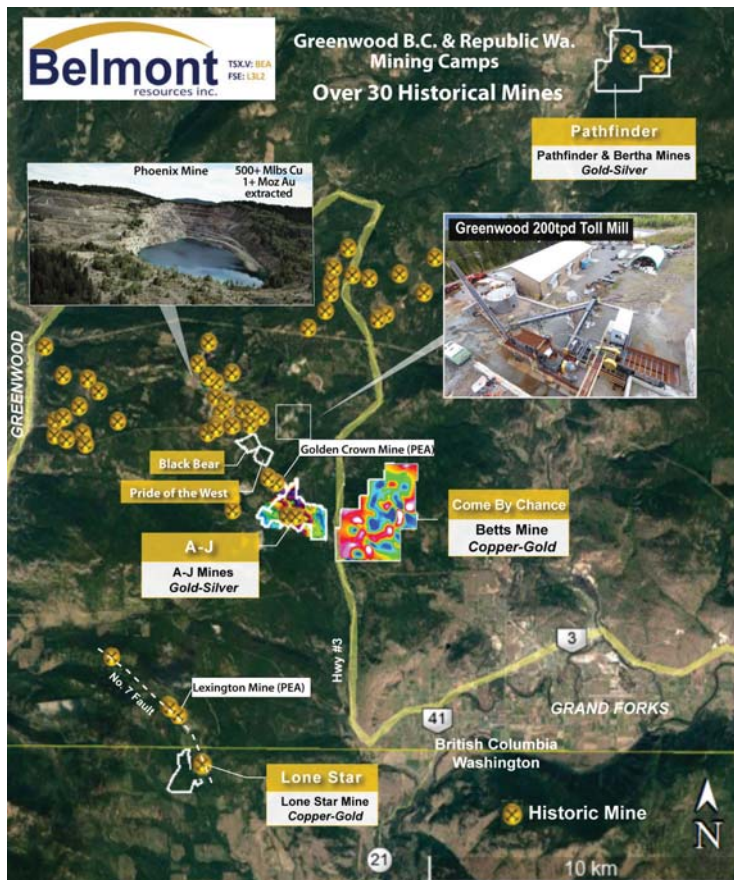
2022 To Be a Very Aggressive And Active Field Season

- ▶ **Come By Chance - Copper-Gold - *Drilling in Progress***
- ▶ **Lone Star - Copper Gold - *Drilling in Progress***
- ▶ **Kibby Basin - Lithium - *Drilling to start May 1, 2022***

Greenwood - Republic Mining Camps

Four of Belmont's properties are situated in the prolific Greenwood and Republic mining camps. With over 30 past producing mines, this area is considered to be one of the most concentrated mineralized areas in North America.

Belmont is utilizing new technology and geological modeling to explore deeper beneath the shallow depth of the historical mines.



Belmont Properties in Southern B.C. and Washington State

- ▶ **Come By Chance (CBC) - Betts Mine (100%) *Skarn-Porphyry Target - Drilling in Progress***
2021 exploration delineated strong drill targets
2,500m drill program planned for April 1, 2022
- ▶ **Lone Star - Lone Star Copper-Gold Mine *Historic Resource- Drilling in Progress***
Marquee Resources (ASX:MQR) to earn 80%
6,000m drilling program in progress
updating and expanding high grade copper historic resource
- ▶ **A-J - Athelstan & Jackpot Gold Mines (100%) *Near Surface Bulk Tonnage***
Drilling beneath mines planned for Q3 2022
- ▶ **Pathfinder - Bertha & Pathfinder Mines *Optioned - Highrock to earn 75%***
Futher exploration work Q2 2022
- ✳ **All properties are within 15 kms of the Greenwood 200 tpd toll mill.**

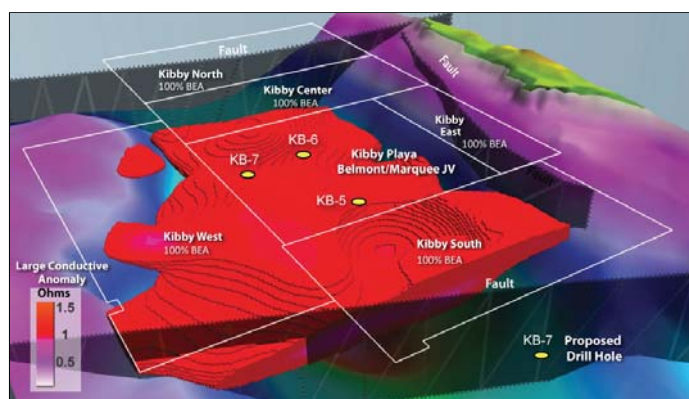
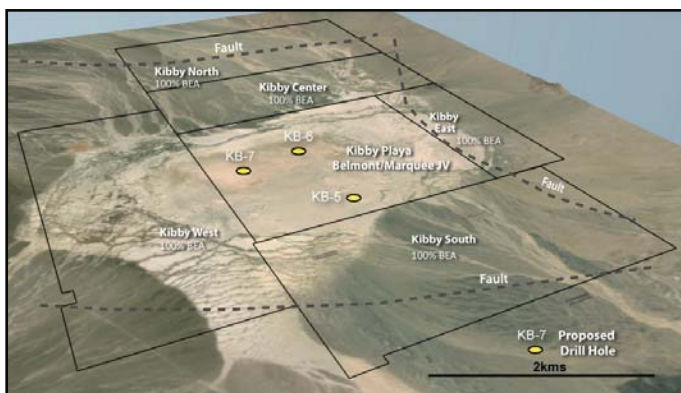


Drilling planned for May 2022

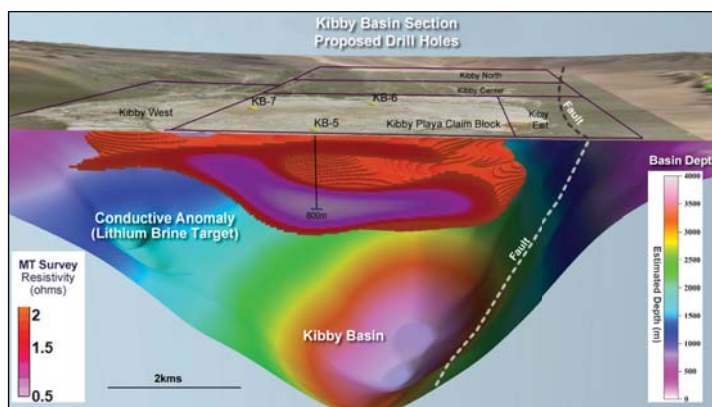
Marquee Resources (ASX.MQR) to spend \$2.5M and issue 3M shares to acquire an 80% interest in the Kibby Playa Block, one of six claim blocks on the Kibby Basin.

The Kibby Basin properties are located 60 kms north of Clayton Valley Basin. The Basin has similar characteristics to the Clayton Basin which makes it conducive to lithium brine content.

- A pull-apart drop down closed basin.
- Basin has structural traps and is closed with no outlets for drainage.
- The setting of Kibby Flat indicates a basin large enough to develop layers that could act as aquifers as well as allow for development of a favorable hydrogeologic setting to host lithium-bearing brines.
- Gravity survey suggests a basin with sufficient depth to provide enough volume of Quaternary sediments to host aquifers of sufficient extent.
- Geothermal indicators suggest an area with locally higher heat-flow.
- Geophysical survey identified large conductive anomaly that may represent a potential large target for Li-brines.



Magnetelluric (MT) Survey, which measures the conductivity of material (lithium brines are highly conductive), indicates a large highly conductive anomaly (<2 ohms) beneath the Playa lake bed which is the signature target for lithium brine.



Drilling is planned for May 2022. 3 drill holes totalling 2,500m will test the conductive anomaly in various areas of the Kibby Playa Claim Block.

Management & Directors

George Sookochoff, B.Comm.	President, CEO, Director & Chairman
Gary Musil	CFO & Director
James Place, P.Geo.	Director
Laurence Sookochoff, P.Eng.	Director
Geoffrey Peretz	Director

Share Structure (February 27, 2022)

TSX.V:BEA	
Shares:	52.6M
Warrants:	26.6M
Options:	4.0M
Fully Diluted:	83.2M