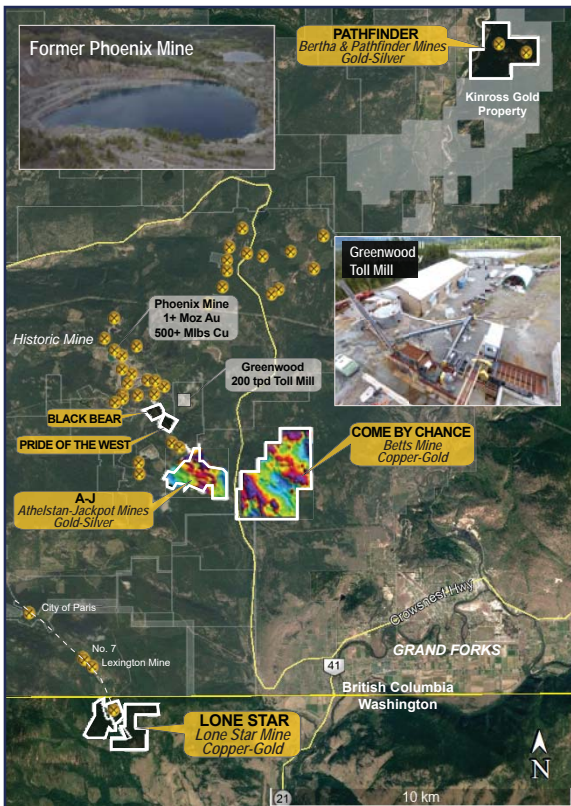


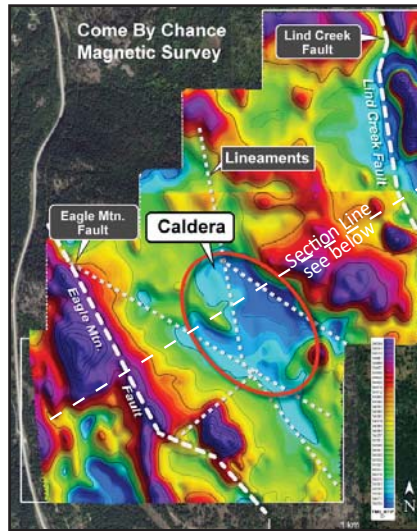
# Exploring for today's valued metals

## Gold - Copper Projects, B.C. & Washington State

- ▶ **A-J - Athelstan & Jackpot Gold Mines**
- ▶ **Come By Chance - Betts Copper-Gold Mine**
- ▶ **Pathfinder - Bertha & Pathfinder Gold Mines**
- ▶ **Lone Star - Lone Star Copper-Gold Mine**



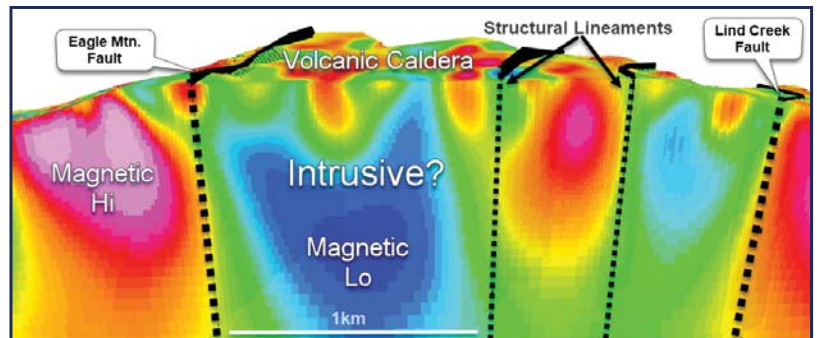
Belmont Property Map - British Columbia & Washington State



Come By Chance Magnetic & Structures

### Come By Chance Project

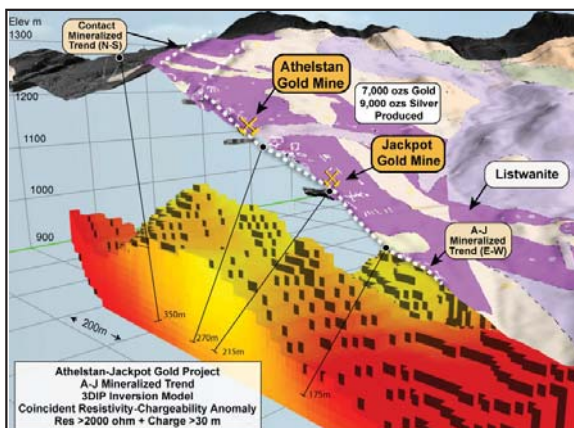
- ▶ Potential copper/gold porphyry and epithermal type deposit of a bonanza gold-bearing zone.



Come By Chance Magnetic Section Viewing NW

### A-J Gold Project

- ▶ A 2,000m drill program recently completed
- ▶ All samples are being sent for gold analysis and the results will be disclosed when received from the assay lab
- ▶ Drill program tested a coincident IP anomaly beneath the Athelstan and Jackpot past producing gold mines



A-J Section Map





Kibby & Clayton Valley Basins

The Kibby Basin fits the model for lithium brines developed by Bradley, et al (2013) and shares many characteristics with Clayton Valley, where lithium brines are being exploited...

- ▶ 16,000 acre claim covering most of the Kibby Basin
  - ▶ Closed structural basin
  - ▶ Large conductor at depth
  - ▶ Lithium anomalies at surface and depth
  - ▶ Evidence of a geothermal system
  - ▶ Potential aquifers in porous ash and gravel zones
- + Fully Permitted for Water**

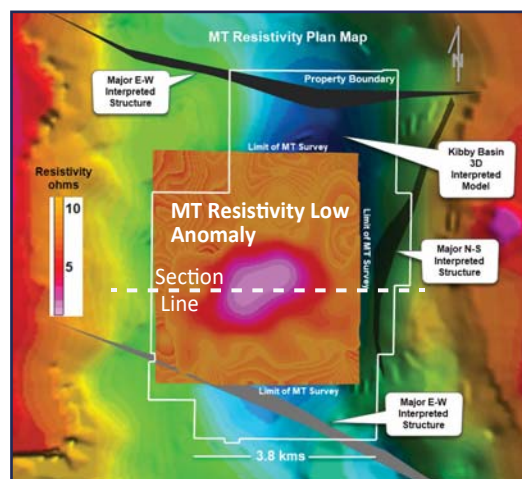
## ▶ Kibby Basin

8.0 kms long and 3,000 m deep with an east-west asymmetry similar to the Clayton Valley basin and appears to be an important control to brine entrapment.

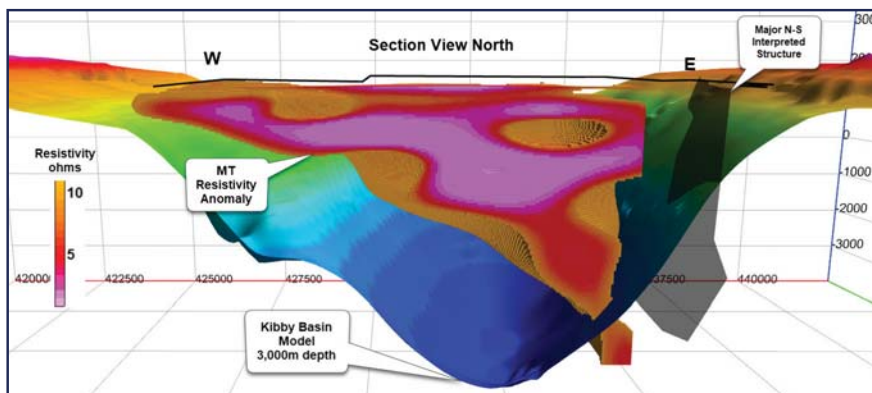
## ▶ MT Geophysical Survey

The MT resistivity clearly mapped a thick and conductive zone (resistivity low) at approximately 500m depth that may represent a potential large target for Lithium-brines.

- ▶ **Lithium rich brines** are associated with very conductive (resistivity low) zones at depth as “Lithium brine deposits are accumulations of saline groundwater (conductive) that are enriched in dissolved lithium.”



Kibby Claim Over MT Anomaly and Basin Model



Kibby Basin Section Viewing North

## Management & Directors

George Sookochoff, B.Comm.	President, CEO, Director & Chairman
Gary Musil	CFO & Director
James Place, P.Geo.	Director
Laurence Sookochoff, P.Eng.	Director
Vojtech Agyagos	Director
Linda Caron, M.Sc., P.Eng.	Consulting Geologist

## Share Structure (March 1, 2021)

TSX.V:BEA	
Shares:	44.8M
Warrants:	29.0M
Options:	3.0M
Fully Diluted:	76.8M