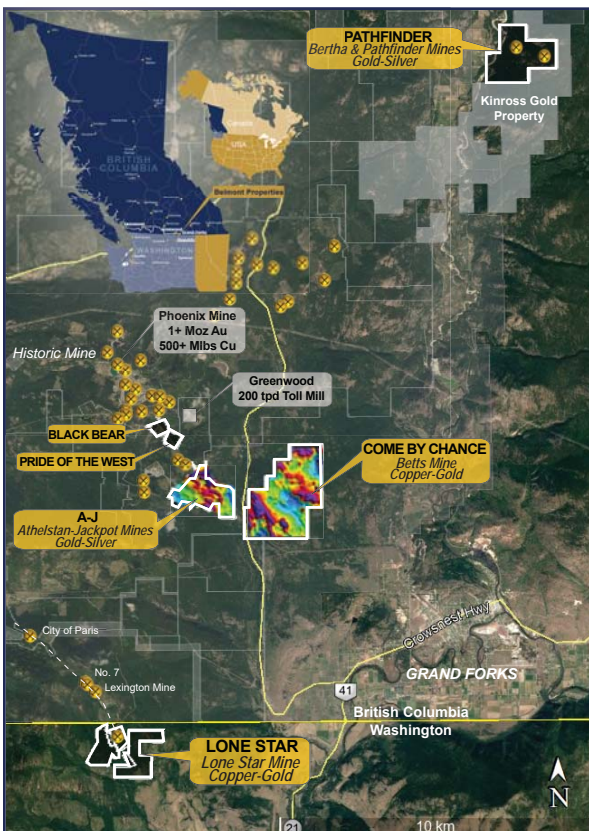


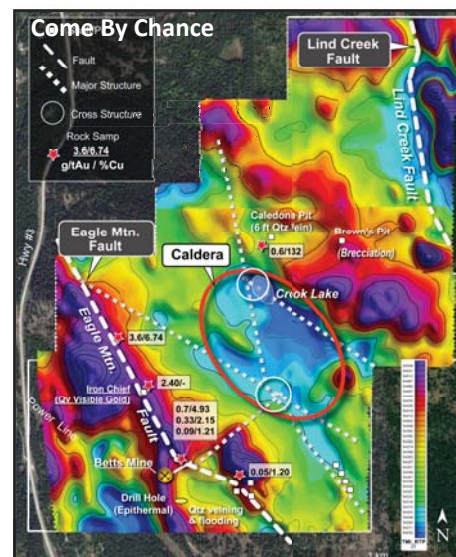
- ▶ **Drilling: 2,000m drill program to start February 1, 2021**
- ▶ **Target: Large coincident high resistivity+high chargeability anomaly**
- ▶ **Only 150m below Athelstan and Jackpot gold mines**
- ▶ **Target may be causative source of extensive gold mineralization at surface**
- ▶ **Historic drilling was very shallow searching for very near surface mineralization and never tested the area of the anomaly**



- ▶ **2020 - What We Accomplished**
- Acquisitions: 6 Properties & 6 Past Producing Mines**
- ▶ **A-J - Athelstan & Jackpot Gold Mines**
Work - Historic Data Compilation, LIDAR, Mag & 3D IP Surveys
- ▶ **Come By Chance - Betts Copper-Gold Mine**
Work - Historic Data Compilation, LIDAR & Mag Surveys
- ▶ **Pathfinder - Bertha & Pathfinder Gold Mines**
Work - Historic Data Compilation
- ▶ **Lone Star - Lone Star Copper-Gold Mine**
Work - Historic Data Compilation
- ▶ **Black Bear & Pride of the West**
- ▶ **2021 - What We Plan To Do**
- Exploring Beneath Mines For Mineralization Source**
- ▶ **A-J - Drill Large IP Target Beneath AJ Gold Mines (Source?)**
- ▶ **Come By Chance - Deep Penetration IP To Delineate Large Copper-Gold Porphyry Target, Possible Drilling**
- ▶ **Pathfinder - 3D IP Survey Over Two Mines**
- ▶ **Lone Star - Move Historic Resource (2007) To Current Resource, using today's metal prices. Drilling to expand resource**

► Come By Chance - Large Copper/Gold Porphyry Deposit Target

- Geology, Lidar and Magnetic surveys indicate potential of a mineral resource associated with the deep-seated mineral-bearing intrusive beneath a caldera.
- **2021 Planned Work Program:** Belmont is planning to run “Quantec’s Titan DCIP & MT survey. Survey will provide a depth of investigation >2000m and provide valuable information as to the overall “plumbing system” of the potential porphyry system and fluid channels used to deliver mineralization to surface.



► Lone Star - High Grade Copper With A Gold Kicker

- Historic resource with potential to expand laterally and at depth.

2007 Lone Star Historic Resource Estimate @ 1.5% Cu Equivalent Cut-Off Grade							
Class	Tonnes	Au g/t	Cu %	AuEq g/t	CuEq%	AuEq ozs	Cu Mlbs
Indicated	63,000	1.28	2.3	8.82	2.69	19,600	3.19
Inferred	682,000	1.46	2.0	8.02	2.44	192,936	30.07

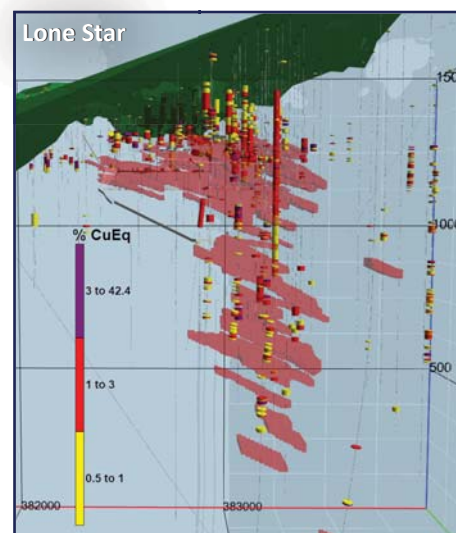
1.5% CuEq cut-off metal price: Au@US\$593/oz; Cu@US\$2.84/lb

- Many historic Lone Star intercepts demonstrate underground mine widths and grade.

Hole ID	From (m)	To (m)	Thickness (m)	Au g/t	Cu %	Cu%EQ	
IC-2	55.5	60.8	5.3	NA	5.80	>5.80	
IC-4	70.1	73.2	3.1	NA	16.25	>16.25	
IC-7	106.0	122.6	16.5	NA	3.71	>3.71	
IC-13	166.1	176.8	10.7	NA	3.73	>3.73	
L81-3	68.9	83.2	14.3	1.06	3.01	3.38	
K-9	6.1	13.7	7.6	1.70	4.05	4.82	
K-13	32.0	36.6	4.6	2.56	2.97	3.87	
G-55	32.3	35.7	3.4	4.58	6.69	8.29	
	NA-not assayed						

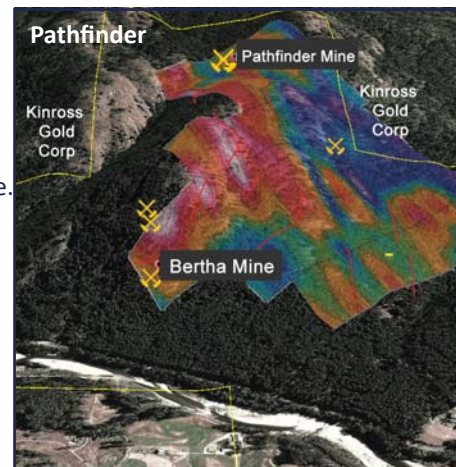
- **2021 Planned Work Program:** Move historic resource to current resource using current metal prices. Drill to expand resource.

Mineral resources which are not mineral reserves do not have demonstrated economic viability. The quantity and grade of reported inferred resources in this estimation are conceptual in nature.



► Pathfinder - Gold/Silver

- 1900 -1939 - A total of 839 tonnes of material shipped at an average grade of 15.13 g/t Au and 137.3 g/t Ag.
- **Kinross Gold** (5th largest producer of gold) has staked claims around Pathfinder.
- **2021 Planned Work Program:** 3D IP over two mines to delineate potential drill targets.



Management & Directors

George Sookochoff, B.Comm.	President, CEO, Director & Chairman
Gary Musil	CFO & Director
James Place, P.Geo.	Director
Laurence Sookochoff, P.Eng.	Director
Vojtech Agyagos	Director
Linda Caron, M.Sc., P.Eng.	Consulting Geologist

Share Structure (Jan. 6, 2021)

TSX.V:BEA	
Shares:	41.9M
Warrants:	27.7M
Options:	3.2M
Fully Diluted:	72.8M