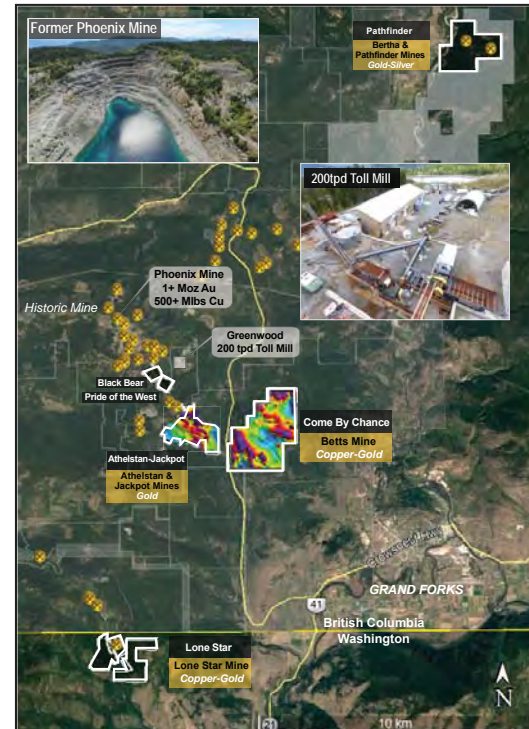


**A strong portfolio of projects containing 6 past producing gold-silver-copper mines situated in the prolific Greenwood mining camp of southern British Columbia**

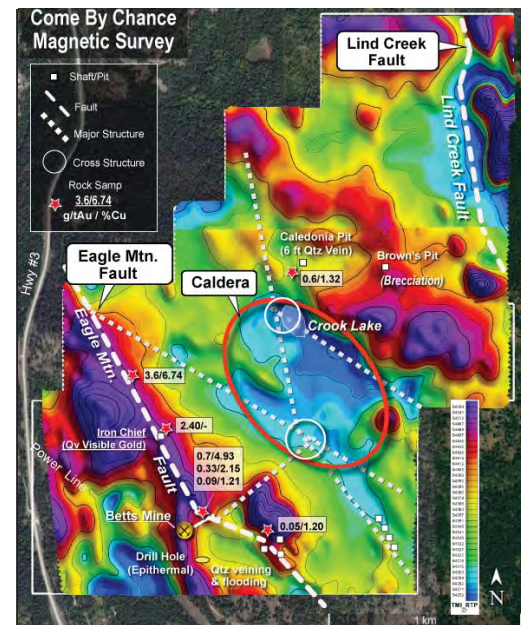
- ▶ **A-J** - Athelstan & Jackpot Gold Mines\*
- ▶ **Come By Chance** - Betts Copper-Gold Mine\*
- ▶ **Pathfinder** - Bertha & Pathfinder Gold Mines
- ▶ **Lone Star** - Lone Star Copper-Gold Mine

\* *flagship property*

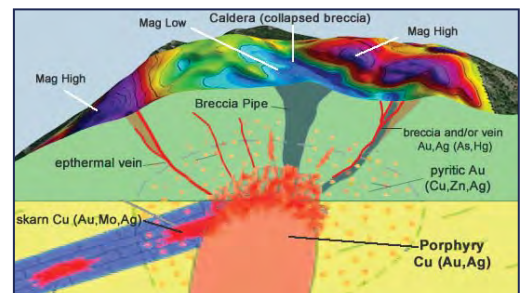
- The Greenwood mining camp - considered to be one of the most concentrated mineralized areas of British Columbia.
  - Area has no less than 30 historical past producing mines and 49 documented mineral showings.
  - All of the historic mines are less than 150 metres in depth with the majority being less than only 50 metres deep leaving potential for extended mineralization to depth.
  - With reinterpreted historic data and by utilizing new and advanced exploration technology such as UAV geophysical surveying (*Unmanned Aerial Vehicles*), Belmont is exploring for the deep seated feeder systems and vertical hydrothermal conduits providing the gold-copper mineralization to the relatively shallow historic mines at surface.
- ## Come By Chance Project- Betts Mine
- ### Large Copper-Gold Porphyry Target
- Recent exploration supports a deep-seated copper-gold porphyry model.
  - Low-level magnetic survey has provided a greater indication of a Volcanic Caldera.
  - The indicated Caldera is supported by a one kilometre diameter magnetic low which are bounded by the Eagle Mountain and Lind Creek Faults.
  - Survey reveals cross-structural locations formulated by major structures which may be prime locations for hydrothermal breccia revealing mineralization transported from deep-seated intrusive porphyritic intrusion.
  - Company is planning a "Titan Deep Penetration (~4kms) IP Survey to detect the signature of the potential porphyry system.



Southern British Columbia Property Map



Magnetic Survey and Structures



Come By Chance Conceptual Model

Shares O/S: 36.2 M  
Warrants O/S: 23.3 M

Options O/S: 3.2 M  
Fully Diluted: 62.7 M

## Lode Gold Mineralization of the Motherlode Type

- Property contains past producing **Athelstan and Jackpot gold mines**.

Production: **7,600 ozs Au & 9,000 oz Ag**

- Mineralization associated with **listwanite**, a key ultramafic rock alteration directly associated with several multi-million ounce gold deposits in British Columbia (Atlin, Bralorne and Barkerville) as well as the Motherlode District in California.

- Listwanite is identified as a **magnetic low signature** as a result of the destruction of magnetite during the alteration process.

- Two priority drill targets are identified by correlated **Listwanite-Magnet Low-Gold Mineralization** signatures.

- A-J Trend:** Low-angle southwest-directed drilling to test for shallow low-grade bulk-tonnage gold mineralization across the mineralized trend.

- Contact Trend:** Test for gold mineralization at depth beneath the J34, J12 and A Zones. This area consists of a contact between a granodiorite intrusive (source of gold?) and shallow overlying listwanite rock.

- J-34 Gold Zone:** 1986 historic chip sampling in this zone returned grades of 17.6 g/t Au, 19.3g/t Au and 23.9 g/t Au

- 'A' Gold Zone:** 2002 chip samples returned grades of **3.0 m @ 35.2 g/t Au and 2.5m @26.2 g/t Au**

- Waiting results from 3DIP survey to delineate drill targets at depth. 5 year drill permit pending.

