



## Continuing Where Past Producers Have Left Off



Belmont Resources has over a short period of time systematically **acquired 6 past producing gold and copper-gold mines** in the prolific Greenwood & Republic mining camps.

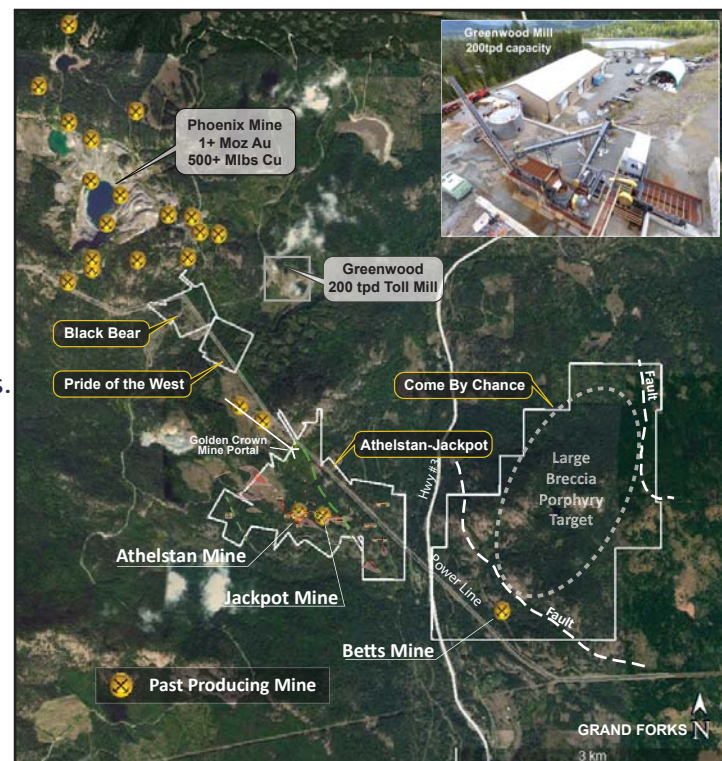
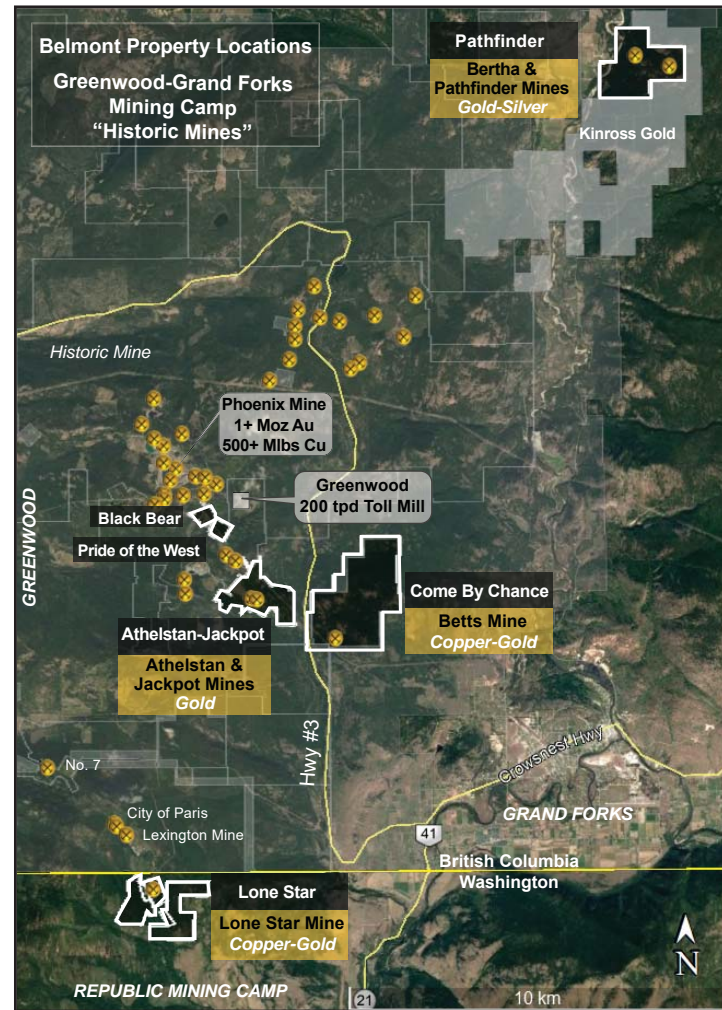
With these acquisitions Belmont Resources has become a major land holder of gold and copper properties in these mining districts.

- ▶ **A-J - Athelstan & Jackpot Gold Mines**
- ▶ **Come By Chance - Betts Copper-Gold Mine**
- ▶ **Pathfinder - Bertha & Pathfinder Gold Mines**
- ▶ **Lone Star - Lone Star Copper-Gold Mine**

- The Greenwood & Republic mining camps have produced over 6 million ounces of gold.
- The Greenwood camp alone has no less than 30 historical past producing mines and 49 documented mineral showings.
- All of the historic mines are less than 150 metres in depth with the majority being less than only 50 metres deep leaving potential for extended mineralization to depth.
- Belmont has compiled and reinterpreted over 100 years of historic exploration and mining data from these two camps.
- *With the reinterpreted historic data and by utilizing new and advanced exploration technology such as Deep Penetration UAV geophysical surveying (Unmanned Aerial Vehicles), Belmont is exploring deeper to discover the sources of mineralization for the recently acquired shallow historic gold-copper mines.*

Shares O/S: 24.7 M  
Warrants O/S: 13.7 M

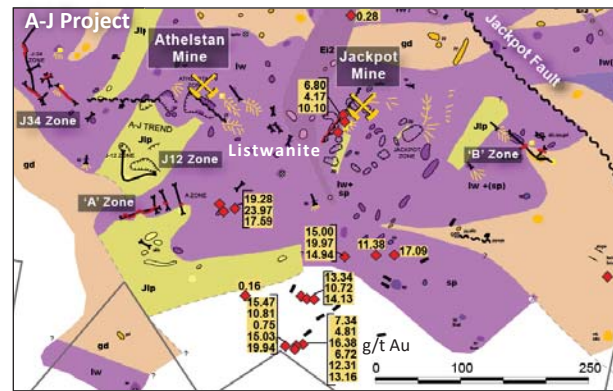
Options O/S: 1.6 M  
Fully Diluted: 39.9 M



## ▶ A-J Project - Athelstan-Jackpot Mines

### Listwanite-Associated Lode Gold Mineralization of the Motherlode Type

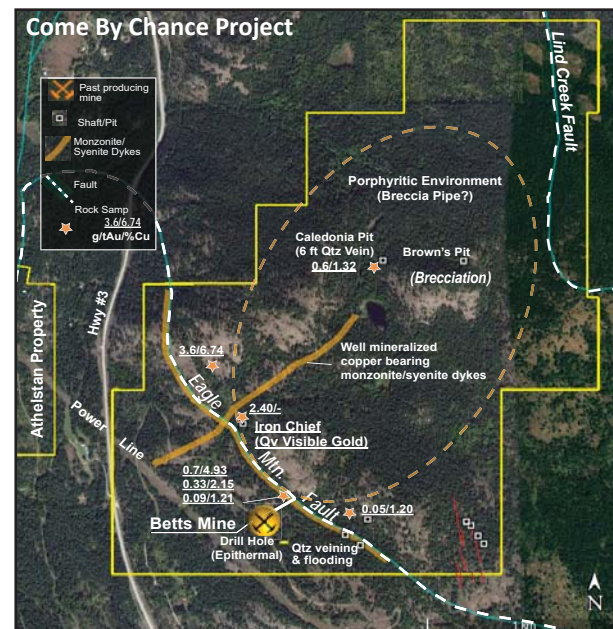
- Listwanites are host to world-class gold deposits.
- A key ultramafic rock alteration directly associated with several multi-million ounce gold deposits in British Columbia, Atlin, Bralorne and Barkerville as well as the Motherlode District in California (production of US\$300,000,000 in pre-1945\$) where the largest concentrations of free gold occur at or near the intersection of veins with listwanite rocks.
- Athelstan and Jackpot gold mines and at least 9 known gold mineralized zones extending over an approximate area of 1,000 by 240 metres associated with listwanite rock.
- Athelstan and Jackpot gold mines produced 7,600 ozs Au & 9,000 oz Ag.
- The Company is awaiting approval of a 5 year drilling & IP permit application.



## ▶ Come By Chance Project- Betts Mine

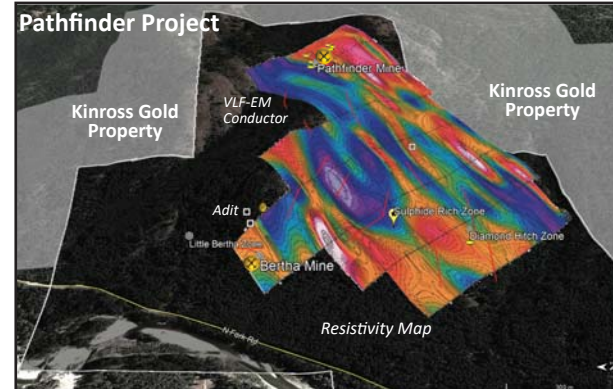
### Large Copper-Gold Porphyry Breccia Target

- Indications of the presence of a large breccia porphyry system contained within two major faults. Extensive brecciation at surface indications of breccia pipe and suspected link to an underlying porphyry.
- Presence of well mineralized copper bearing monzonite potentially displaying a porphyry/skarn linkage further indications of porphyry potential in the monzonites.
- Numerous pits and adits throughout the property revealing Cu-Au-Ag skarns and epithermal Qtz veining and Qtz flooding.
- A high definition 25m line spacing UAV magnetometer survey is planned to outline the magnetic signature over the large porphyry target.



## ▶ Pathfinder Project- Bertha & Pathfinder Mines

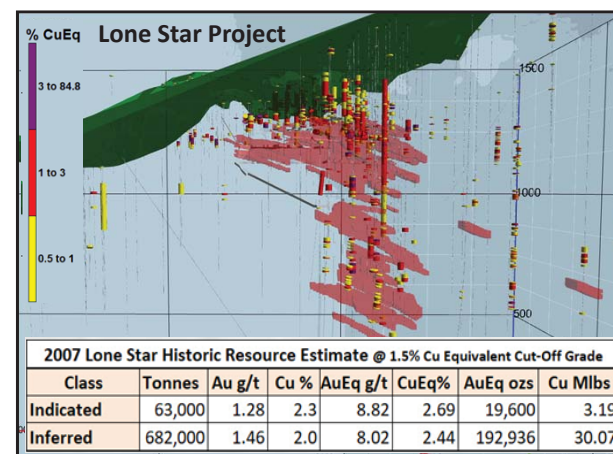
- From 1900 to 1939, 876 tonnes of ore containing 467 ounces of gold, 4,242 ounces of silver, 29 kilograms of copper and 391 kilograms of lead were shipped from the Little Bertha mine.
- The Pathfinder mine produced 239 tonnes @ 3.12 g/t gold, 16.9 g/t silver & 1% copper.
- 2000 sampling returned gold values up to 50.9 g/t & 3.7% copper.
- Kinross Gold recently acquired property surrounding the Pathfinder.



## ▶ Lone Star Project- Lone Star Mine

- The past producing Lone Star Mine operated over two time periods; from 1897-1918 producing from underground 146,540 tonnes, and from 1977-1978 by Granby Mining Co. when 400,000 tonnes of open pit ore were transported to its Phoenix mill in B.C, 11km to the north.
- The property contains a 2007 historic resource (1) and has potential to expand laterally and at depth.
- Belmont geologists have reconsidered the high-grade Cu +/- Au drill hole intercepts for the potential to support an underground operation.

Hole ID	From (m)	To (m)	Thickness (m)	Au g/t	Cu %	Cu%EQ
L81-3	68.9	83.2	14.3	1.06	3.01	3.38
K-9	6.1	13.7	7.6	1.70	4.05	4.82
K-13	32.0	36.6	4.6	2.56	2.97	3.87
G-55	32.3	35.7	3.4	4.58	6.69	8.29



(1) A qualified person has not done sufficient work to classify the historic estimate as current mineral resources or mineral reserves. As such the issuer, Belmont Resources, is not treating this historical estimate as current mineral resources or mineral reserves